



Pro-invest Australian Hospitality Opportunity
Q1 2022 Quarterly Newsletter

Dear Investors and Friends,

It is with pleasure that Pro-invest Asia Pacific (APAC) presents you with our Pro-invest Australian Hospitality Quarterly Newsletter for the first quarter of 2022.

Australia's and New Zealand's economic growth remained strong amidst the Omicron outbreak in late 2021 – early 2022. Australia's international borders have reopened on 21 February 2022 after nearly 2 years of border controls. Australia continues to ease travel restrictions, including removing quarantine requirements for inbound international visitors to Sydney, Melbourne, and Canberra. At the time of writing this Newsletter, New Zealand has also reopened its international borders to c. 60 countries including Australia in April 2022 to May 2022. By July 2022, NZ will be fully reopened. Further details will be included in the next Newsletter.

Australia's hotel market trading performances improved significantly by the end of Q1 2022, with Brisbane, Adelaide and Canberra tracking close to 2019 levels REVPAR. Meanwhile, New Zealand's reopening of international borders will underpin the country's hotel market recovery in Q2 2022.

Pro-invest APAC is excited to open the Kimpton Margot Sydney CBD Hotel and Holiday Inn Express (HIE) Melbourne Little Collins in February 2022. In May 2022, Pro-invest APAC is opening the voco Auckland City Centre (12 May 2022), HIE Auckland City Centre (May 2022), HIE & Suites Sunshine Coast (May 2022), voco Brisbane City Centre (June 2022) and Indigo Brisbane City Centre (June 2022).

Further, Pro-invest Asia Pacific-Pacific Hospitality Opportunity Fund III ("Fund III") successfully settled the acquisition of the brand new constructed Sebel Canberra Campbell (FKA C5 Hotel Canberra) on 22 April 2022. Located in Canberra (capital of Australia), the hotel is expected to open for trading in Q3 2022 after Pro-invest APAC fit out the hotel with FF&E and rebrand it with The Sebel brand.

Further, Pro-invest Group and Next Story Group have launched Vista Hospitality Group Australasia, a hotel management company with over 1,500 rooms in operation and growth strategy across AU & NZ through hotel management agreements, leases & brand franchises. This will provide Pro-invest Group further opportunity to leverage on scale and optimize existing and future hotel assets.

Over the next 6-12 months, further opportunities are set to arise, which Pro-invest APAC is well positioned to leverage through our active asset management approach and unique vertically integrated platform creating significant value generation opportunity for our investors. COVID-19 has impacted hotel cash flows harder than any other real estate sector and presents a rare opportunity to secure luxury, upper upscale and upscale hotel assets at scale and preferred equity positions. Further prospects are being assessed throughout the region which include exploring value-add hotel opportunities created by COVID-19 for the redevelopment, refurbishment or repositioning of these assets for increased returns.

With a team comprised of industry veterans and specialists and unique operating structure allowing for full control of the entire value chain, coupled with Pro-invest APAC's well-formed network, track-record and access to unique off-market opportunities, Pro-invest APAC is positively positioned to overcome and even leverage off the hurdles presented by COVID-19. To date, Pro-invest APAC is managing c. A\$2.7 billion worth of assets through several funds, co-investments, and other assets that Pro-invest APAC manages.

Pro-invest Group is also pleased to announce the launch of 'One Earth, Countless Experiences' as a core part of Pro-invest Group's brand. 'One Earth, Countless Experiences' was established to bring ESG across each stakeholder journey at Pro-invest Group full circle. For the "One Earth, Countless Experiences" ESG brand film, please click [here](#).

We wish you all health and safety. As always, welcome your comments and feedback.

With kind regards,

Ronald Stephen Barrott FRICS,
CEO Pro-invest Group

On behalf of Pro-invest Group

For more information about Pro-invest Group please visit:

www.proinvestgroup.com

Q1 2022 ANZ Market Update

Australian Economy

Australia's economy remained resilient during the Omicron outbreak in late 2021 – early 2022, with December 2021 quarter Gross Domestic Product (GDP) rising by 3.4% quarter-on-quarter (QoQ) and 4.2% year-on-year (YoY).¹ This was primarily driven by increased household consumption, particularly spending within recreation & culture, and the hotels & cafes segments.² The easing of lockdowns and border restrictions, and sustained jobs creation supported the rebound in consumer spending.³ Australia's labour market remained strong, with rising employment, alongside 13-year low unemployment rates in March 2022.⁴

Inflation rate and average wage growth are forecasted to rise and surpass their respective 10-year average rates in the next 2 years in Australia.⁵ Market expectations are for Australia's interest rate to also start rising from mid-2022, reaching 2% – 3% by 2023/24.⁶ Australia's short-term 90-day BBSW and 10-year bond yields are also forecasted to increase in next 2 years, with 10-year bond yields already reaching 7-year highs at 3.06% as of 19 Apr 2022.⁷ These along with global geopolitical tensions, rising construction & FFE costs and shortage of staff may impact the economic growth.

Australia's economic growth fundamentals, however, remain strong, with high accumulated savings over the past 2 years expected to underpin the household spend rebound, the Omicron variant's economic disruption proving minimal given Australia's widespread vaccination coverage, robust government infrastructure spending, and high residential construction activity.⁸

¹ Australian Bureau of Statistics (ABS), Australian National Accounts Dec 2021, 03.2022.

² The Guardian, News Article, 03.2022.

³ RBA, Monetary Policy Decision, 04.2022.

⁴ ABS, Labour Force, 04.2022.

⁵ RBA 02.2022 and 03.2022, NAB AU Markets Weekly 04.2022, Westpac AU & NZ Weekly 04.2022, CBA 03.2022, ING Forecasts 04.2022, UOB Q2 2022 Global Outlook 03.2022.

⁶ NAB AU Markets Weekly, 04.2022, Westpac AU & NZ Weekly, 04.2022, CBA, 03.2022, ING Forecasts, 04.2022, UOB Q2 2022 Global Outlook, 03.2022.

New Zealand Economy

New Zealand's GDP rose by 3% QoQ and 5.6% YoY for the December 2021 quarter, as the economy emerged from COVID-19 lockdowns.⁹ Activity improved across the services, manufacturing, and construction sectors as businesses reopened and household consumption spending improved.¹⁰

NZ has reopened its international borders to Australia in April 2022 and will further reopen to c. 60 countries by May 2022. This would assist in the continued recovery of the economy, with the gradual revival of international tourism, education, and improved labour & skill supply.¹¹

Over the past 6 months, New Zealand raised its Official Cash Rate (OCR) four times, with the recent OCR hike in April 2022 by 50 bps.¹² This is expected to support price stability, sustainable employment, and reduce inflation pressures.¹³ The Reserve Bank of New Zealand (RBNZ) forecasts New Zealand's CPI and wage growth to rise in 2022 due to rising global energy and commodity prices, supply chain disruptions, and domestic demand pressures.¹⁴ With further rate hikes anticipated, New Zealand's 90-day BKBM rates and 10-year NZ Government bond yields have increased significantly over the past 9 months, with the latter reaching a 5-year high as of 19 April 2022.¹⁵ These along with global geopolitical tensions, rising construction & FFE costs and shortage of staff may impact the economic growth.

New Zealand's economic fundamentals, however, remain strong, underpinned by the country's robust balance sheets, continued fiscal support, and strong export earnings.¹⁶ Economic disruptions from the Omicron variant have also been small relative to previous variants, with the country's high vaccination rates assisting in business activity and easing COVID-19 restrictions.

⁷ Trading Economics, Australia Government Bond 10Y, 04.2022.

⁸ KPMG, Australia Economic Outlook Q1 2022, 04.2022, Australia Government, 2022-23 Budget, 03.2022.

⁹ Stats NZ, Gross Domestic Product December 2021, 03.2022.

¹⁰ Stats NZ, Gross Domestic Product December 2021, 03.2022.

¹¹ UOB, Quarterly Global Outlook Q2 2022, 03.2022.

¹² RBNZ, OCR decision and media release, 04.2022.

¹³ RBNZ, OCR decision and media release, 04.2022.

¹⁴ RBNZ, OCR decision and media release, 04.2022.

¹⁵ Trading Economics, NZ Government Bond 10Y, 04.2022.

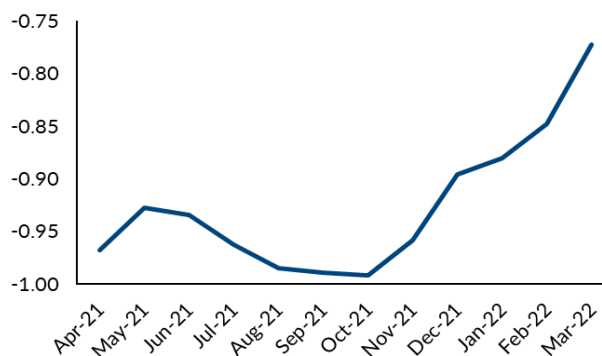
¹⁶ RBNZ, OCR decision and media release, 04.2022.

Australia - New Zealand Tourism Update

International Tourism

On 21 February 2022, Australia has reopened international borders to all eligible fully vaccinated visa holders after nearly 2 years of border controls. Monthly overseas arrivals to Australia in March 2022 recorded its highest level since the start of the pandemic, c.75% below March 2019.¹⁷

Figure 1: Monthly International Arrivals to Australia (Indexed to 2019)

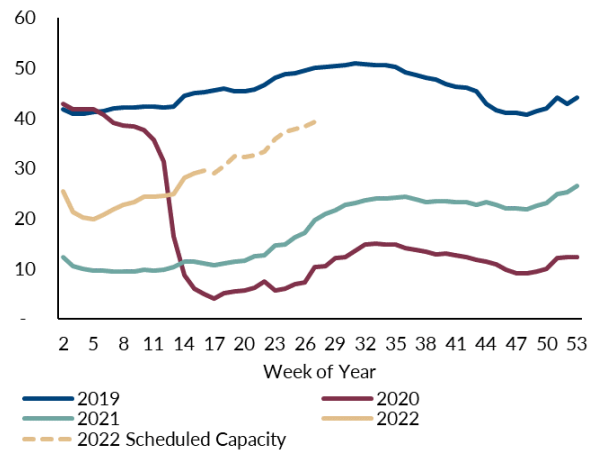


Source: ABS, Overseas Arrivals and Departures, 04.2022. Note: March-2022 figures are "provisional" estimates

Australia's travel requirements continue to ease over Q2 2022. There are no quarantine requirements for unvaccinated overseas arrivals entering NSW, VIC, and ACT from April 2022 ending, and other Australian states and territories have mostly reduced quarantine requirements from 14 days to 7 days.¹⁸ Also, all international arrivals into Australia no longer require negative COVID-19 results pre-departure from mid-April 2022. Close contacts of people with COVID-19 need not anymore isolate in NSW and VIC, and international cruise ships have started entering Australia for the first time in 2 years.¹⁹

Globally, weekly scheduled international flights have continued to increase, particularly as the Asia-Pacific (APAC) region continues easing COVID-19 restrictions and reopen international borders.²⁰

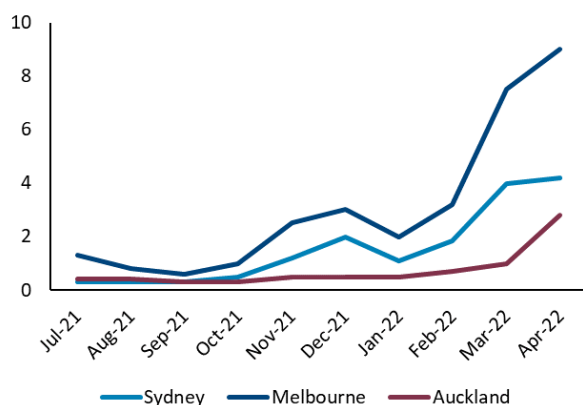
Figure 2: Weekly Airline Seats for International Flights Globally (Millions)



Source: OAG, COVID-19 Air Travel Recovery, 04.2022

Flight searches to key travel destinations across AU & NZ have also increased since the start of 2022, indicating pent-up travel demand for the year.²¹

Figure 3: Flight Search Evolution Index



Source: IHG, Commercial Connections Call, 04.2022.

In New Zealand, international borders have reopened to Australia in April 2022, and further c.60 countries by 1 May 2022, 2 months earlier than the previous timeline.²² These includes Australia, US, UK, Germany, Japan, and Singapore, which represents over 60% of the New Zealand's overseas arrivals in 2019.²³ Major airline carriers are already increasing flight capacities into the country over the next few months.²⁴

¹⁷ ABS, Overseas Arrivals and Departures, 04.2022 and 05.2019.

¹⁸ ABC News, "NSW and Victoria have relaxed isolation guidelines", 04.2022.

¹⁹ Department of Health, Media Release "Australia's biosecurity emergency pandemic measures to end", 03.2022, Travel Pulse, "After Two Years, Australia's Ban on Cruise Ships Expires" News Article, 04.2022.

²⁰ OAG, COVID-19 Air Travel Recovery, 04.2022.

²¹ IHG, Commercial Connections Call, 04.2022.

²² Unite Against COVID-19, NZ Government, 03.2022, Forbes, Travel Restrictions Update for April 2022, 04.2022.

²³ Immigration New Zealand, Visa Waiver Countries and Territories, 04.2022, Stats NZ, International Travel December 2021, 02.2022.

²⁴ CAPA, "NZ border reopens", 03.2022.

Pro-invest Australian Hospitality Funds

Overview

In early 2000, Pro-invest's CEO, Ronald Barrott brought one of the largest and most renowned hotel brands, Holiday Inn Express® (HIE), to the European market. At the time, he developed a portfolio of HIE hotels across the UK, which he grew to become one of the largest franchised hotel portfolios outside of the US. ***Over a period of 6 years, 15 HIE assets were developed and the portfolio was exited as a trade sale achieving an IRR in excess of 30%.***

In 2013, given his successful relationship with InterContinental Hotels Group (IHG) and a substantial market opportunity, Ronald launched the Pro-invest Australian Hospitality Fund I (Fund I) to develop, own and operate a new portfolio of HIE hotels across Australia and New Zealand (ANZ). Fund I has laid the foundations for the HIE brand's expansion in the market, in which c. 50 prime target areas have been identified. Fund I is a widely held Managed Investment Scheme, allowing for a final withholding tax rate of 15%. Its portfolio now counts 8 hotels and c. 2,000 rooms, being rolled out under a Master Development Agreement with IHG.

By 2017, Pro-invest APAC launched the Pro-invest Australian Hospitality Fund II (Fund II), which successfully completed equity raising in 2020. Fund II continues Pro-invest APAC's strong track record of rolling out its Select Service and Lifestyle hotels throughout the Australasian market.

Pro-invest APAC is currently managing more than c. A\$2.7 billion in real estate assets, including commercial assets as well as hotels operating under globally renowned brands such as Holiday Inn Express, Hotel Indigo, Kimpton and voco™.

Pro-invest APAC-Pacific Hospitality Opportunity Fund III (Fund III)

Pro-invest APAC is pleased to announce having launched its third hotel fund, the Pro-invest APAC-Pacific Hospitality Opportunity Fund III (Fund III).

In April 2022, Fund III successfully settled the acquisition of the brand new constructed Sebel

Canberra Campbell (FKA C5 Hotel Canberra) on 22 April 2022. The hotel is a 63-rooms serviced apartment located in Canberra, Australia (capital of Australia). Pro-invest will fit out the hotel with FF&E and rebrand it with The Sebel brand. The hotel is expected to open for trading in Q3 2022.

Pro-invest APAC is actively looking at other opportunities which are in the pipeline for Fund III. Unprecedented market conditions created by COVID-19 have established an opportunity to make value-add investments into standing and income producing assets primarily in luxury, upper-upscale and upscale full-service hotels in Australia & New Zealand, as well as other secure markets in Asia.

Fund III is structured to capitalise on the current opportunity, presenting a platform that allows investors to participate in travel recovery. Pro-invest APAC is targeting to raise A\$500 million from institutional investors, sovereign wealth funds and established family offices.



Voco and HIE Auckland City Centre

Figure 4: New Zealand International Borders Planned Opening Timelines as of 19 April 2022

Source Destinations	Expected Opening Date
Australia	12 Apr 2022 (Opened)
c.60 Visa-Free Countries	May 2022
All foreign travellers with eligible employment visas	July 2022
Rest of the World	Oct 2022

Source: Unite Against COVID-19, NZ Government, 04.2022

Domestic Tourism

Australia’s domestic tourism nearly reached pre-pandemic levels at the start of 2022, mainly driven by improved interstate travel after Australia exited lockdowns in later part of H2 2021, and domestic borders reopened.²⁵ By March 2022, Western Australia was the last Australian state to fully reopen its domestic borders with the rest of the country. Although the floods in Sydney and Brisbane have impacted the positive recovery momentum of Australia’s domestic tourism in the latter part of Q1 2022, the longer term recovery remains positive, with Qantas increasing its domestic flight capacity to nearly reach pre-COVID-19 levels by the end of H1 2022.²⁶

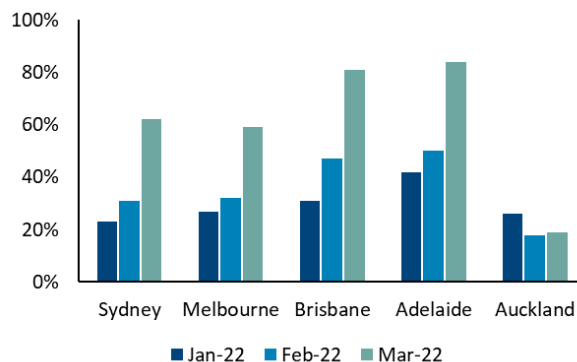
In New Zealand, domestic arrivals and departures in both Auckland and Queenstown airports improved in January 2022, after the country reopened its domestic borders and eased travel restrictions.²⁷ Although the Omicron outbreak and recent social distancing rules affected domestic travel for the rest of Q1 2022, the rules have quickly eased in April 2022.²⁸

Corporate Travel

The Global Distribution System (GDS) for corporate bookings has shown an uptick for key tourism markets in Australia.²⁹ Meanwhile, Auckland’s GDS

data are expected to improve in Q2 2022 with New Zealand’s international borders still remained closed during Q1 2022.

Figure 5: GDS Market Actuals Compared to 2019



Source: IHG, Commercial Connections Call, 04.2022.

Australian & New Zealand Tourism Support & Campaigns

In March 2022, the Australian government released its annual Federal Budget, setting aside \$146.5 million towards the tourism industry. Key initiatives include \$75.7 million targeted support for travel agents and tour arrangement service providers, and \$60 million towards global marketing campaigns.³⁰

Visa application fees for international students and working holiday makers entering Australia between January 2022 to April 2022 were waived, with further relaxation of age restrictions and visa caps to support backpacker travel demand.³¹

Other key tourism campaigns in Q1 2022 included the \$40 million “Don’t Go Small. Go Australia” global marketing campaign, roadshows in the US, and the annual “Destination Australia Conference”, with c. 1,100 industry professionals attending.³²

In New Zealand, the “New Zealand, within your wildest dreams” campaign was launched in March 2022, aimed at attracting Australian tourists.³³ Further, travel restrictions were lifted to expedite up to 275 foreign ski workers into the country to

²⁵ Tourism Research Australia, Domestic Tourism, 04.2022.

²⁶ ABC News, News Article, 04.2022, CAPA, “Qantas resumes capacity recovery trajectory”, 03.2022.

²⁷ Auckland Airport, Monthly Traffic Update, 04.2022.

²⁸ Auckland Airport, Monthly Traffic Update, 04.2022, NZ Government, Unite Against COVID-19, 04.2022.

²⁹ IHG, Commercial Connections Call, 04.2022.

³⁰ Minister for Trade, Tourism and Investment, Media Release, 03.2022, Business News Australia, “Global \$60 million tourism package” News Article, 03.2022.

³¹ Australia Government, “Australia welcomes return of international students and backpackers” Media Release, 02.2022, Australia Government, “Age limit increase” Media Release, 03.2022.

³² Sky News, “Australia’s \$60 million plan” News Article, 03.2022, Tourism Australia, Tourism Australia Update 6 Apr, 04.2022, Tourism Australia, Destination Australia, 04.2022.

³³ Newshub, “Tourism NZ launches ‘wildest dreams’ campaign” News Article, 03.2022.

support hospitality businesses during the winter holiday period.³⁴

ANZ Hotel Market Performance

Australia

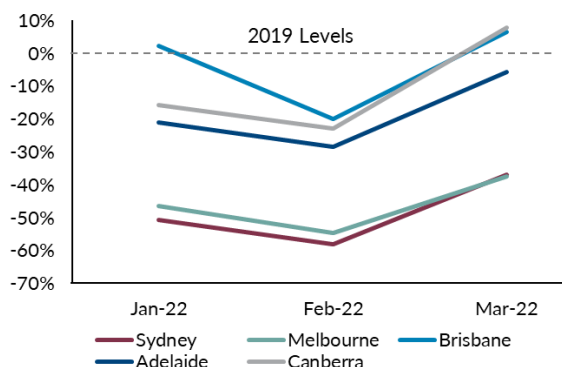
The trading performance of Australia’s key hotel markets improved in Q1 2022 after Australia ended its lockdowns over Q4 2021. This improvement was more prominent in March 2022, post Australia’s reopening of international borders and removal of indoor mask requirements by various states.³⁵ Over Q1 2022, Brisbane, Adelaide and Canberra have been tracking close to 2019 levels REVPAR. Sydney and Melbourne hotel markets have also seen significant trading improvement over Q1 2022 YoY.

Figure 6: Australian Hotel KPI YTD Mar 2022

Market	Occ (%)	ADR (A\$)	RevPAR Change (vs YTD Mar 2021)	RevPAR Change (vs YTD Mar 2019)
Australia	55%	208	25%	-20%
Sydney	47%	218	39%	-48%
Melbourne	48%	192	53%	-46%
Brisbane	55%	180	36%	-3%
Adelaide	62%	178	9%	-17%
Canberra	61%	188	34%	-10%

Source: STR, ANZ Performance Update, 04.2022

Figure 7: Markets Monthly REVPAR (indexed to 2019)



Source: STR, ANZ Performance Update, 04.2022

New Zealand

With New Zealand’s international borders remained largely closed in Q1 2022, and some social distancing and travel restrictions being imposed, this has stalled any meaningful recovery of the country’s hotel trading performance for the quarter.³⁶ However, with New Zealand’s international borders opening in Q2 2022, this will support the country’s start of recovery phase.³⁷

Figure 8: New Zealand Hotel KPI YTD Mar 2022

Market	Occ (%)	ADR (NZ\$)	RevPAR Change (vs YTD Mar 2021)	RevPAR Change (vs YTD Mar 2019)
New Zealand	41%	186	-20%	-58%
Auckland	43%	209	-23%	-52%
Queenstown	30%	170	-17%	-81%

Source: STR, ANZ Performance Update, 04.2022

³⁴ NZ Immigration, “Approved class of workers”, 04.2022.

³⁵ STR, ANZ Performance Update, 04.2022.

³⁶ Colliers, New Zealand Hotel Market Snapshot, 02.2022.

³⁷ Colliers, New Zealand Hotel Market Snapshot, 02.2022.

In-Focus Feature: Pro-invest APAC is excited to open 7 hotels from February 2022 to June 2022

Pro-invest APAC is excited to open the 312-rooms HIE Melbourne Little Collins on 28 February 2022. Ideally located in the heart of town on one of Melbourne's most iconic laneways, HIE Melbourne Little Collins is a stone's throw from Federation Square and the banks of the Yarra River, and just 700 metres from Marvel Stadium, Melbourne Aquarium and Melbourne Convention Centre. The coveted position amid majestic heritage buildings, a variety of boutiques, hole-in-the-wall bars, cool cafes and historic arcades provides the ideal base from which to explore Australia's culture capital.

Each of the 312 modern guest rooms feature a calming palette of earthy wood tones mixed with blue and lime green and have been thoughtfully designed to offer a seamless and comfortable stay and feature unique touches such as a study nook, speedy WiFi, premium bedding, Express Recharge, choice of pillows, black-out blinds and a walk-in power shower.

Pro-invest APAC is also excited to open the Kimpton Margot Sydney CBD Hotel on 14 February 2022. The 172-rooms hotel is housed in a magnificent heritage-listed Art Deco building in the middle of Sydney's CBD, and close to Hyde Park, Pitt Street Mall, and other corporate and leisure drivers. The hotel boasts a pet-friendly policy, an in-room exercise streaming service, and hosting a dedicated Social Hour. Kimpton Margot Sydney CBD Hotel has also partnered with leading Australian chef Luke Mangan to headline the hotel's all-day restaurant, Luke's Kitchen.

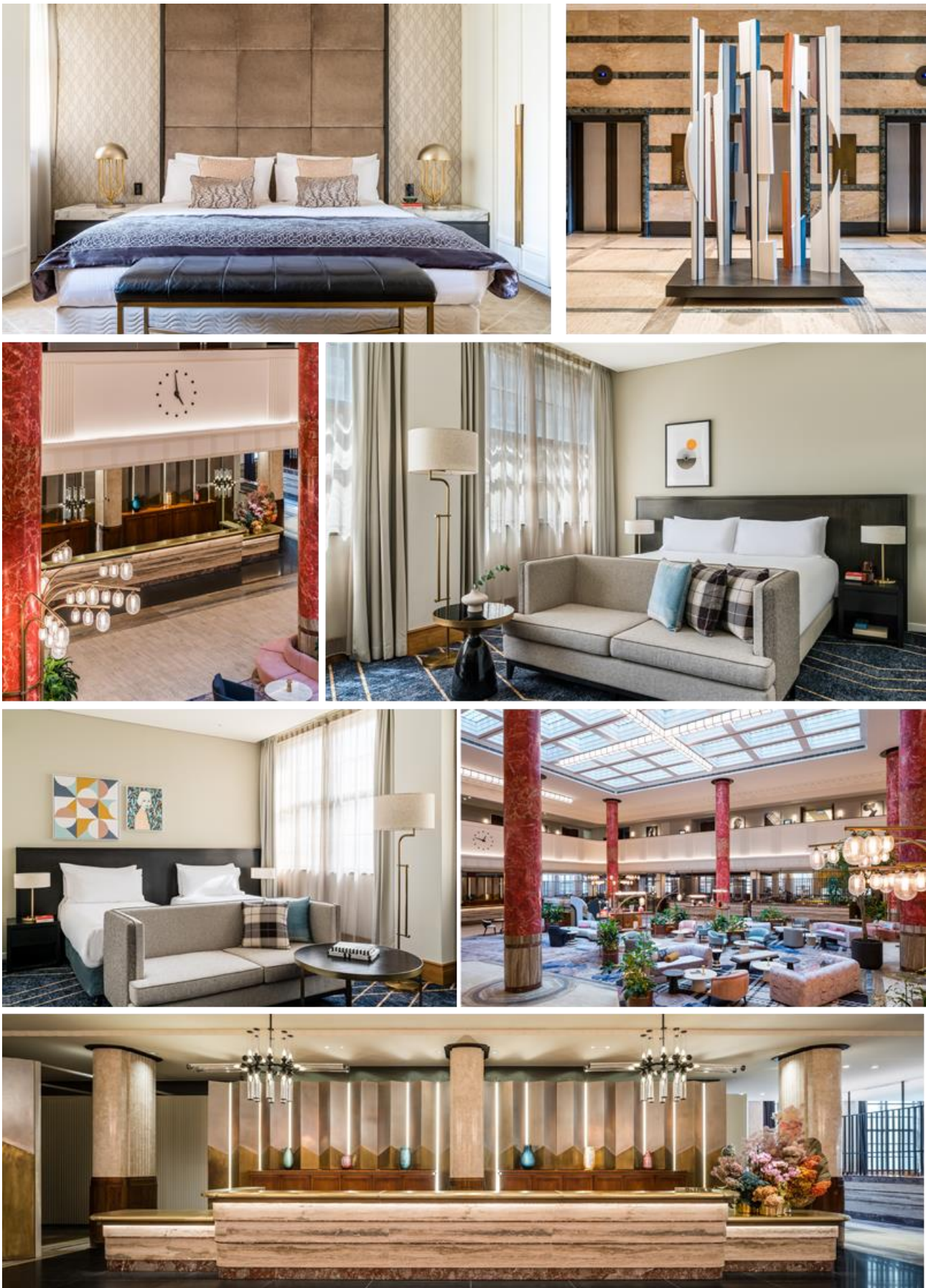
On 12 May 2022, Pro-invest has opened the voco Auckland City Centre hotel, with the HIE Auckland City Centre opening 26 May 2022. Both hotels have started receiving tour requests from potential clients who are coming away with a respect for the attention to detail and luxury that the voco Auckland hotel portrays, and the accessibility of the HIE Auckland hotel with a refreshing decor and ample accommodation options. With trees planted outside both hotels, they are starting to make themselves felt as a fixture of the Auckland skyline and a serious contender in the commercial accommodation market.

Also in May 2022, Pro-invest is opening the HIE & Suites Sunshine Coast hotel. Ideally located in Maroochydore City, the Sunshine Coast's new CBD, HIE & Suites Sunshine Coast is the perfect base for those wanting to explore all that this iconic coastal town has to offer. Each of the hotel's 181 guest rooms and suites have been thoughtfully designed to offer a seamless and comfortable stay featuring unique touches such as speedy WiFi, study nooks, premium bedding and the brand's signature 'Express Recharge' which includes a pillow menu, black-out blinds and a walk-in power shower. The hotel also features a complimentary Express Start Breakfast, a shimmering rooftop pool with views of Maroochydore, convenient conference and function facilities, and flexible workspaces.

In June 2022, Pro-invest APAC is opening the Voco Brisbane City Centre hotel and Indigo Brisbane City Centre hotel. The property overlooks the Brisbane River and some of Brisbane city's best cultural institutions. Pro-invest APAC will refurbish and rebrand both hotels, with a total of 404 guestrooms.



Note: Images of HIE Melbourne Little Collins



Note: Images of Kimpton Margot Sydney



Note: Actual Images and Artist Perspective of voco Auckland City Centre



Note: Images of HIE Auckland City Centre



Note: Images of HIE & Suites Sunshine Coast

ESG Announcements: Introducing the Launch of



by PRO-INVEST GROUP

The Launch:

Pro-invest is pleased to announce the launch of ‘One Earth, Countless Experiences’ as a core part of our brand. ‘One Earth, Countless Experiences’ was established to bring ESG across each stakeholder journey at Pro-invest full circle.

Pro-invest looks forward to launching ‘One Earth, Countless Experiences’ publicly at the Australasian Hotel Industry Conference and Exhibition (AHICE) in May 2022.

The Reason:

With Pro-invest being an ESG leader in the hotel sector, this initiative means ESG principles will be applied full circle to the whole platform. Pro-invest recognizes that a true ESG approach should run through everything, big and small, seen and unseen.

ESG at Pro-invest has never been superficial, and now Pro-invest is ensuring ESG is engrained in all fibers of the organization from the ground up, through modular, carbon-neutral, fully recyclable carpeting to giving back to communities.

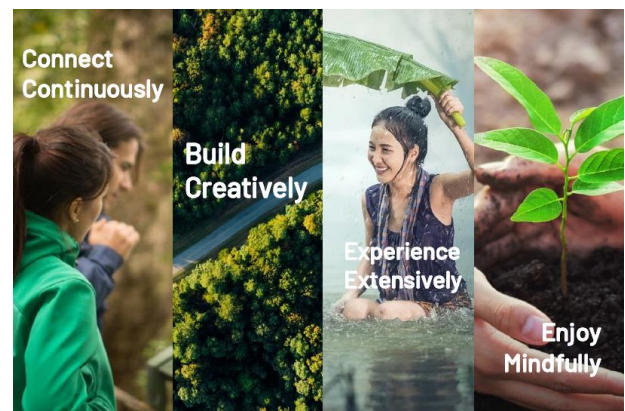


‘One Earth, Countless Experiences’ will inform Pro-invests’ initiatives for years to come, but position us measurably as one of the market’s foremost ESG and sustainability-focused offering long before that.

The Way Forward:

Over the next few months, Pro-invest will be implementing tangible improvements to continue on our journey as a sector-leading organisation for ESG and sustainability measures, with our first agenda to revisit the guest experience and ensure sustainability is tangibly experienced.

This is the future of hospitality and the next logical step for Pro-invest, expanding our existing principles to a comprehensive, end-to-end strategy. ‘One Earth, Countless Experiences’ will be supported by our drive to connect continuously, build creatively, experience extensively and enjoy mindfully across each stakeholder journey.



This is further backed by our ESG charter which will ensure the success of integrating ESG deeper into the fibers of Pro-invest and its business operations.

<p>Always Committed</p> <p>We are always committed to improving our ways.</p> <p>We're in it for the long-run, to produce sustainable returns – financially, socially & environmentally.</p>	<p>Trusted Transparency</p> <p>We maintain our ethos of trust & transparency in all that we get up to.</p> <p>We are respected for our honesty & ensure this is reflected in all that we do.</p>	<p>Reliably Distinctive</p> <p>We maintain our dynamic structure, leveraging our nimbleness & interconnected platform to deliver a unique portfolio that preserves the future of our Earth.</p>
---	---	--

The Commitment:

At Pro-invest, we recognize that sustainability requires meticulous dedication to leave behind a better future for others. As part of ‘One Earth, Countless Experiences’, Pro-invest will ensure that across each lifecycle of investing, developing, working, playing, and staying, we will deliver a sustainable difference.

For the “One Earth, Countless Experiences” ESG brand film, please click [here](#).

www.proinvestgroup.com